

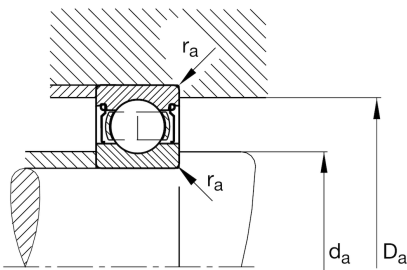
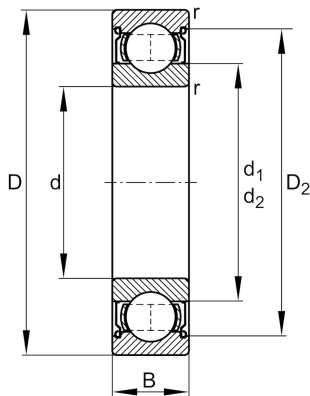
FAG

6032-2Z

Deep groove ball bearing

Schaeffler ID:
0679177800000Deep groove ball bearing 60...-2Z, single
row, shields, steel sheet metal cage

Technical information

**Main Dimensions & Performance Data**

d	160 mm	Bore diameter
D	240 mm	Outside diameter
B	38 mm	Width
C_r	142.000 N	Basic dynamic load rating, radial
C_{0r}	136.000 N	Basic static load rating, radial
C_{ur}	6.000 N	Fatigue load limit, radial
n_G	3.150 1/min	Limiting speed
n_{gr}	3.750 1/min	Reference speed
	5,31 kg	Weight

Dimensions

r_{min}	2,1 mm	Minimum chamfer dimension
D_2	219,7 mm	Caliber diameter outer ring
d_1	185,8 mm	Shoulder diameter inner ring

Mounting dimensions

$d_{a min}$	170,2 mm	Minimum diameter shaft shoulder
$D_{a max}$	229,8 mm	Maximum diameter of housing shoulder
$r_{a max}$	2,1 mm	Maximum fillet radius

Calculation factors

f_0	16	Calculation factor
-------	----	--------------------

Temperature range

T_{min}	-20 °C	Operating temperature min.
T_{max}	120 °C	Operating temperature max.